

ACCEL-VM500/VM1000

VM500 / VM1000 Introduction AI Computing Unit

ACCEL-VM500

- 9th Gen Coffee Lake Refresh Platform**
- E-2278GE, ECC RAM Support, 8 Cores
 - i7-9700E, 8 Core

ACCEL-VM500
3 x 4K Video output



ACCEL-VM1000

- 12th Gen Alda Lake Platform**
- i9-12900E, ECC RAM Support
 - i7-12700TE, ECC RAM Support

ACCEL-VM1000
Support PCIe 4.0 and Dual GPU Card with Nvlink

ACCEL-VM1000
2 x 4K Video output



7" Touch Screen

- High End Graphic Card Support**
- Quadro RTXA4000, 140W
 - Quadro RTXA5000, 230W
 - Quadro RTXA6000, 300W

Support Optional Internal Built-in Speaker

2 x PCIe by 4 Slot for Capture Card Integration

Excellent Thermal Management

ACCEL-VM300

VM300 Introduction Compact Computing Unit

12th Gen Alderlake Platform Core i9 Processor

12V DC output for external Monitor (optional)

High End PCIe Gen Graphic Card Support

- NVIDIA RTX A Series
- A5000/A4000

Support Optional Internal Built-in Speaker

500W Medical Power Supply Support

2 x M.2 NVMe SSD Storage and 2 x 2.5" SSD

Support 12V DC Output for External Monitor

Compact Size

- Slim size 42x35x9cm (for 2U rack mount)

Additional PCIe by 4 for Capture Card Integration

Medical Certification

- CE
- FCC
- UL

onyx
www.onyx-healthcare.com

ACCEL-JS800

Compact AI Computing Unit



NVIDIA Jorin NX Platform

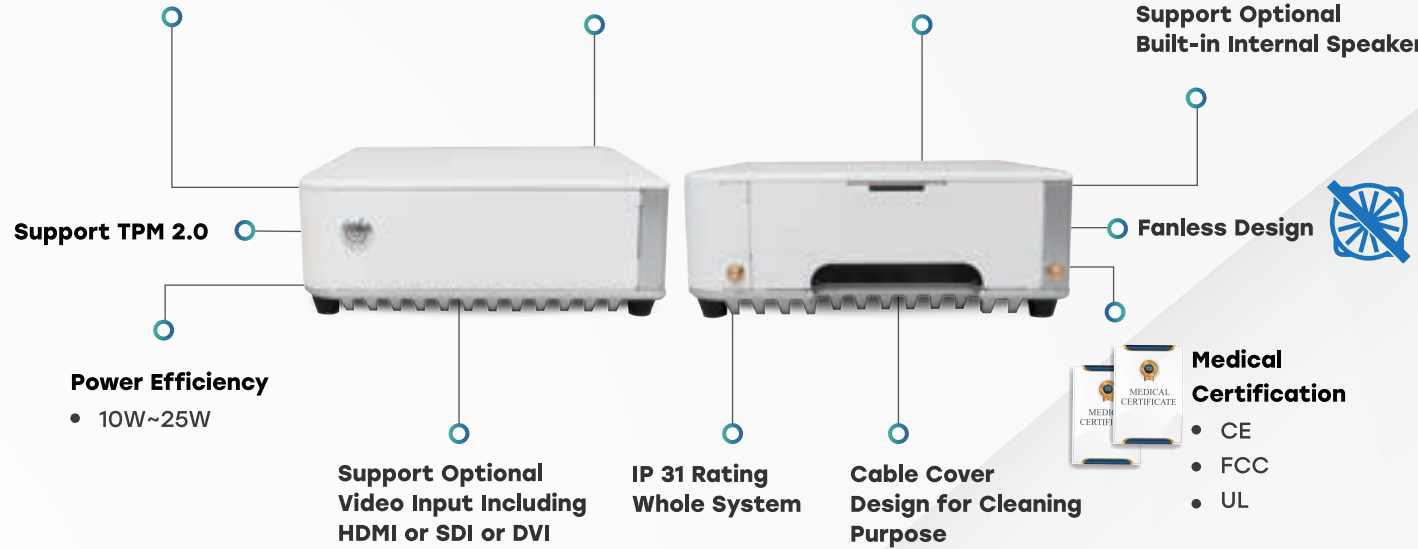
- 8GB LPDDR5 w/70TOPS
- 16GB LPDDR5 w/100 TOPS

Support Multi-Storage Interface

- M.2 NVMe 2280
- Micro SD Card Slot

Support Video Output

- HDMI 2.0 x1
- Optional SDI output



ACCEL-JS1000

AGX Orin AI Computing Unit



NVIDIA Jetson AGX Orin Platform

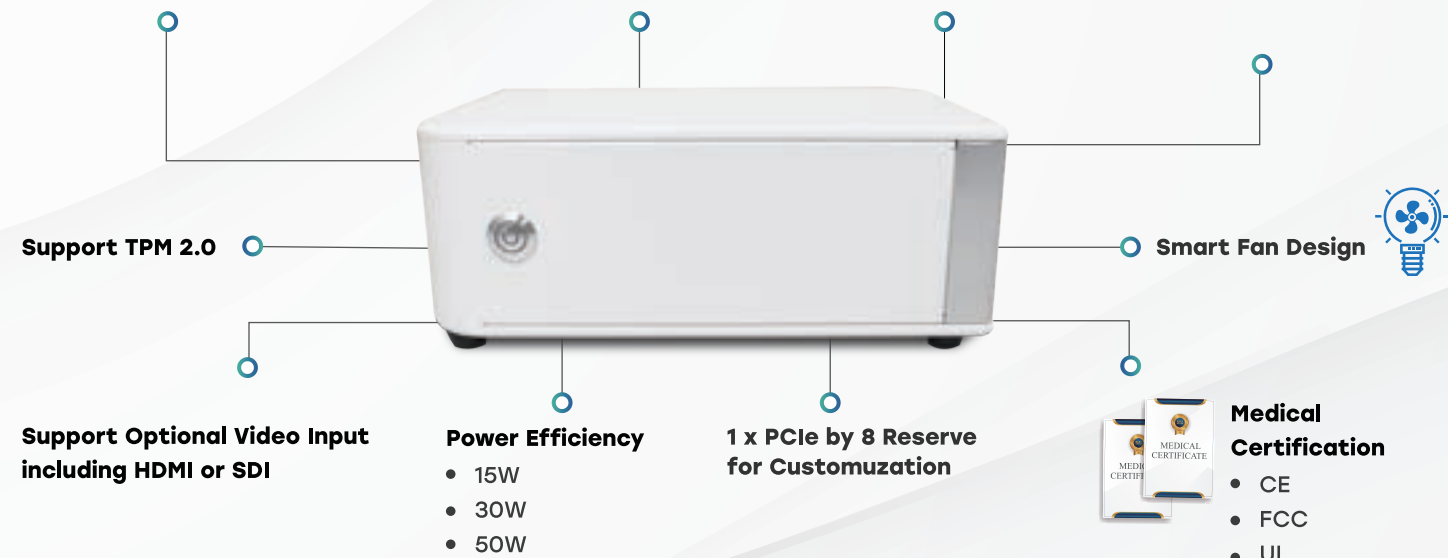
- 32GB LPDDR5 w/200TOPS
- 64GB LPDDR5 w/275TOPS

Support Multi-Storage Interface

- 64GB eMMC
- M.2 NVMe 2280
- Micro SD Card Slot
- 2.5" SATA SSD

Support Video Output

- HDMI 2.0 x1



Contact Information

Onyx Healthcare Inc.
4F., NO.135, Lane 235, Pao Chiao Rd.,
Xindian Dist., New Taipei City 231,
Taiwan (R.O.C.)
Tel: 886-2-8919-2188
Fax: 886-2-8919-1699
E-mail: Sales@onyx-healthcare.com

Onyx Healthcare EUROPE B.V.
Primulalaan 42,5582 GL,Waalre,
The Netherlands
Tel: +31-(0)499-745600
E-mail:sales@onyx-healthcare.com

Onyx Healthcare USA, Inc.
324 W. Blueridge Ave., Orange,
CA 92865
Tel: +1-714-792-0774
Fax: +1-714-792-0481
E-mail:sales@onyx-healthcare.com

onyx
Smart Healthcare on ASUS AIoC

ACCEL YOUR IDEA

AI Computing Platform for Medical Imaging Application

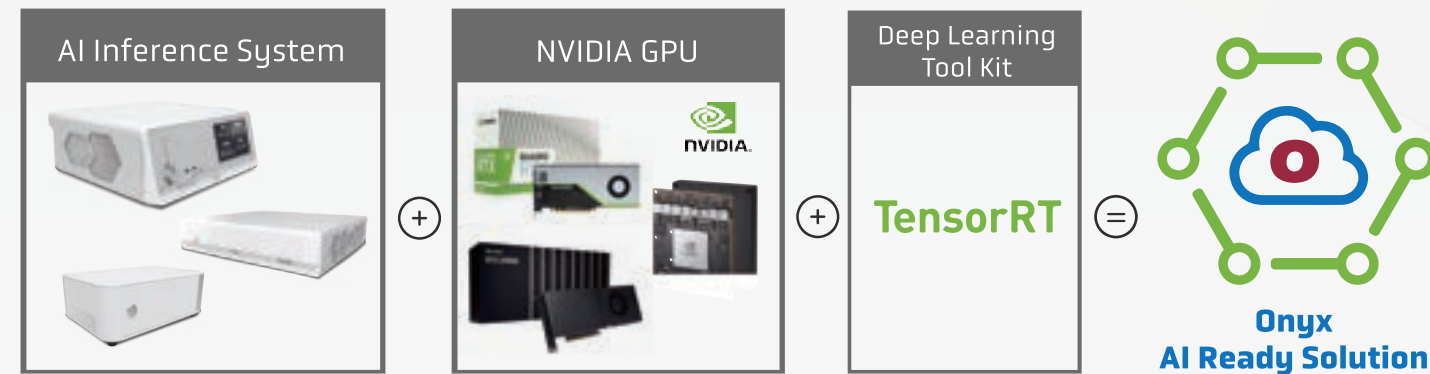


www.onyx-healthcare.com

Onyx Joins NVIDIA Partner Network for Medical AI Ecosystem Solutions



NVIDIA is a global leader in AI development and provides a wide range of solutions and tools for AI developers, with diverse product applications ranging from uses with drones, to smart factories, self-driving cars, as well as the healthcare industry. In order to provide a complete range of medical AI solutions, Onyx Healthcare has joined the NVIDIA Partner Network as a hardware manufacturing partner for their medical AI ecosystem solutions. NVIDIA and Onyx Healthcare are dedicated to working together with medical customers to speed up the implementation of AI technology to make significant contributions to improving healthcare for people everywhere.



Onyx Offering

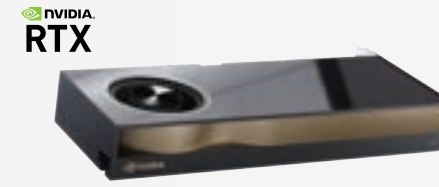
ACCEL-VM Series

- Intel® + NVIDIA GPU Card
- More Flexible for expansion
- More Flexible for CPU and GPU Performance
- Windows and Linux Support

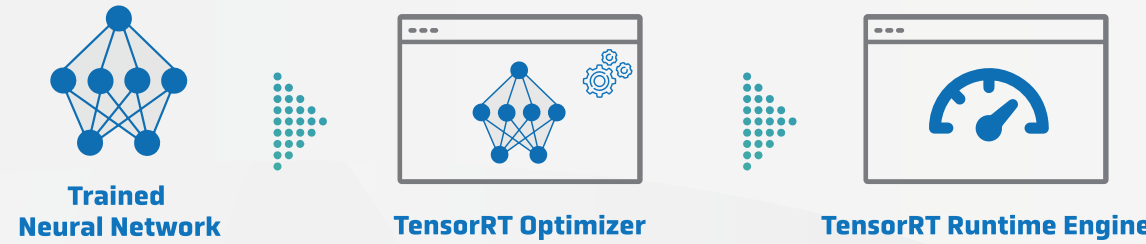
ACCEL-JS Series

- NVIDIA CPU+GPU
- Compact Size
- Low Fan Noise
- Good Enough AI
- AI Focused
- Linux Support

Onyx offer Medical Certified GPU Card



Onyx is offering validated and medical certified GPU card for our customer with our AI ready platform, For the Safety reason, Onyx decided to do medical certification covering CE/FCC/UL of our unit with high end graphic card in order to ensure no safety risk when user use our unit Performance Mapping Chart for ACCEL-VM Series



Quadro GPU and AI Product Mapping Chart

ACCEL-VM300 GPU 30W~200W	ACCEL-VM500 GPU 30W~300W	ACCEL-VM1000 GPU 30W~600W
1 PCIE Capture Card	2 PCIE Capture Card	1 PCIE Capture Card if Dual GPU Installed
T400 4GB T400 4GB/8GB	RTX A5000 24GB	Dual Graphics Card Support
RTX A2000 12GB RTX A4000 16GB RTX A5000	RTX A4000 RTX A6000	RTX A6000 RTX A6000

Mapping Chart for ACCEL JS Series

JETSON Orin NX 8GB	JETSON Orin NX 16GB	JETSON AGX Orin Series	JETSON AGX Xavier Series
70 TOP (INT8)	100 TOP (INT8)	275 TOP (INT8)	32 TOP (INT8)
10-25W 8GB 45mm x 70mm	10-25W 16GB 45mm x 70mm	15-60W 32/64GB 100mm x 87mm	10-30W 32/64GB 100mm x 87mm

ACCEL-A Series ACCEL-A3201/A2701/A2401 Features

- ### Intel 9th Generation Processor
- Xeon E-2276ML 2.0GHz 6 Cores, ECC Support
 - i7-9850HL 1.90GHz 6 Cores

- ### High Quality Display
- 32"/27" UHD / 24" FHD LCD
 - Capacitive Multi-Touch Screen



High End Graphics Card Support

- NVIDIA RTX A4000, 140W
- NVIDIA RTX A2000, 70W



- ### Medical Certification
- CE
 - FCC
 - UL

Flexible Function Expansion

- PCI Express[x4] Slot for Video Capture Card
- PCI Express[x1] Slot for I/O Card

ACCEL-A2203 Features

- ### Intel 13th Generation Processor
- i9-13900TE 5.0GHz 24 Cores



High End MXM Graphics Card Support

- NVIDIA RTX A4500
- NVIDIA RTX A2000
- NVIDIA RTX A1000
- NVIDIA RTX A500



- ### Medical Certification
- CE
 - FCC
 - UL

High Quality Display

- 22" FHD LCD
- Capacitive Multi-Touch Screen

- ### Flexible Function Expansion
- M.2 2280 Slot with PCIe[x4] slot



Onyx Healthcare AI Ready Medical

ACCEL YOUR IDEA

AI Computing Platform for Medical Imaging Application

