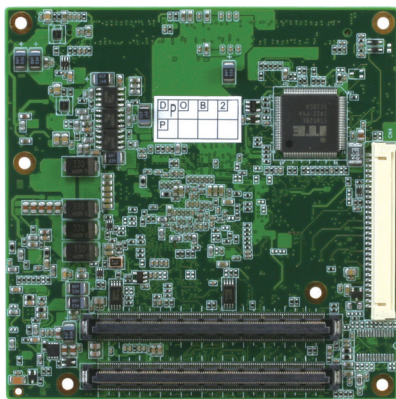
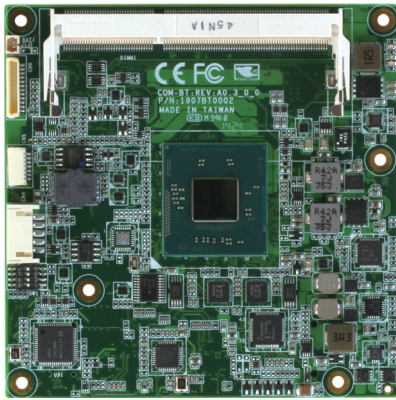


## Motherboard

**COM-BT**

COM Express Type 6 CPU Module with Onboard Intel® Atom™/ Celeron® Processor SoC

**Order information**

- **COM-BT-A30-0001**  
COM Express.Type 6.N2930.4C/1.83 GHz.DDR3L.RTC.  
GbE.USB3.0.SATA.Rev.A3.0
- **COM-BT-A30-0003**  
COM Express.Type 6.E3845. 4C/1.91 GHz.DDR3L.RTC.  
GbE. USB3.0.SATA.Rev.A3.0

**Optional Accessories**

- **ECB-920A-A11-0001**  
COMe T6/10.Carrier Board.ATX.GbE.8USB, 2COM.4SATA.  
PCIe.AT/ATX Rev A1.1
- **PER-A126**  
Heat Spreader, For COM-BT, Onboard CPU
- **COM-HSK02**  
Heat Sink, 95 x 95 x 26.5mm, Silver, use w/HSP
- **COM-FAN02**  
CPU Cooler, 95 x 95 x 26.5mm, Silver, use with HSP

**Features**

- Intel® Atom™/ Celeron® Processor SoC
- DDR3L 1066/1333 MHz SODIMM x 1, Up to 8 GB
- Gigabit Ethernet with Intel® Controller
- CRT, Up to 24-bit Dual-channel LVDS, eDP (Optional), up to DDI x 2 (Share w/ eDP LVDS)
- High Definition Audio Interface
- SATA 3.0 Gb/s x 2
- USB 2.0 x 7, USB 3.2 Gen 1 x 1
- PCI-Express [x1] x 3
- COM Express Compact Module, Pin-out Type 6, COM.0 Rev. 2.1
- Supports Industrial Temperature

**Specifications****SYSTEM**

Form Factor	COM Express, Compact, Pin-out Type 6
CPU	Onboard Intel® Atom™ SoC
CPU Frequency	Intel® Atom® E3845 / Celeron® N2930
Chipset	Intel® Atom™ SoC
Memory Type	DDR3L 1066/1333 MHz SODIMM x 1
Max. Memory Capacity	8 GB
BIOS	AMI BIOS
Wake on LAN	Yes
Watchdog Timer	255 Levels
Power Requirement	Standard: +12V
Power Supply Type	AT/ ATX
Power Consumption (Typical)	0.92A@12V, full load, J1900 0.48A@12V, full load, N2807
Dimension (L x W)	3.74" x 3.74" (95mm x 95mm)
Operating Temperature	32°F ~ 140°F (0°C ~ 60°C) -40°F ~ 185°F (-40°C ~ 85°C) optional
Storage Temperature	-40°F ~ 176°F (-40°C ~ 80°C)
Operating Humidity	0% ~ 90% relative humidity, non-condensing
MTBF (Hours)	80,000
Certification	CE/FCC

**DISPLAY**

VGA/LCD Controller	Intel® Atom™ SoC
Video Output	CRT, LVDS LCD, DDI

**I/O**

Ethernet	Intel® I211, Gigabit Ethernet
Audio	High Definition Audio Interface
USB Port	USB 2.0 x 7, USB 3.2 Gen 1 x 1
Serial Port	Tx/Rx x 2
HDD Interface	SATA x 2
Expansion Slot	PCIe [x1] x 3 (up to 3 devices) LPC SMBus I2C
GPIO	GPIO 8-bit