



## Digital Diagnostic Scope

### More Features, More Reliable

- Ultra High-Resolution image
- 3.5" capacitive touch panel
- Multi-touch (zoom in/ out)
- Wi-Fi / Bluetooth module embedded
- Connect to bigger monitor via USB
- Magnetic pogo touch charger
- Switchable lens for multi able use, the best choice for Telemedicine



## Diagnostic Set

### Device to Device for Telemedicine

Connecting vital sign equipment via Bluetooth to collect important measurements  
Packing all information and uploading to your EMR system with Diagnostic Scope seamlessly



### 3.5" Touch screen



Wi-Fi / Bluetooth  
USB / SD card



Cable lock hole

Mini USB

Pogo pad for charger

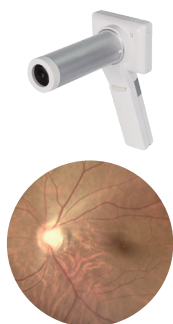
Micro HDMI

USB plug with lock

Magnetic charger

## Through The Scope

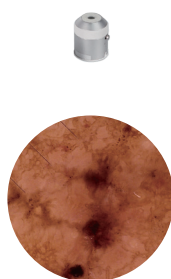
Fundus Scope



Otoscope



Dermoscope



Generalscope



Endoscope



## Specification

Item		Digital Diagnostic Scope
Sensor		5 Megapixels (2560*1920)
Focus type		Focus wheel
LCD monitor		3.5" capacitive touch panel ; multi touch
Microphone		○
Speaker		○
File storage		Micro SD card (2 ~ 32G)
Interface	Wi - Fi	Embedded
	Bluetooth	Embedded
	Micro HDMI (1920 x 1080)	○
	Magnetic charger	○
	Mini USB	○
Function	Manual focus	○
	Auto exposure (endoscope adapter only)	○
	Auto white balance (endoscope adapter only)	○
Lens	Otoscope	○
	Dermatoscope	○
	General lens	○
	Eye fundus lens	○
	Eye anterior lens	○
	Endoscope adapter	○
Picture resolution		2560 x 1920
Video resolution		2560 x 1920
UVC resolution		640 x 480

• Information contained in this leaflet is subject to change without prior notice.

### Contact Window

Tel : +886-2-8919-2188 #2115

Email : FlorianeChung@onyx-healthcare.com

Skype : FlorianeChung@onyx-healthcare.com

www.onyx-healthcare.com



Official Website



Whats APP (Floraine Chung)